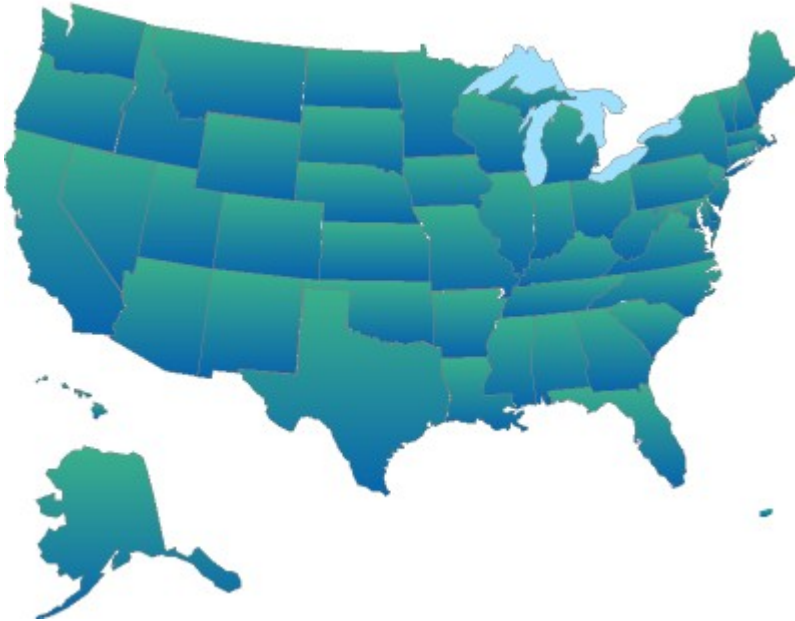

Health Insurer Insights™



July 2009



Table of Contents

About Health Insurer Insights ii

Company Blueprint

Company at a Glance..... 2
Company Background..... 3
Recent Focus 4
Corporate Strategy 6
Management Changes..... 7

Performance Tables

About Health Plan Financial Reporting..... 9
Performance Overview (Annual) 10
Performance Overview (Quarter) 11
Insured Health Plans: Membership 12
Insured Health Plans: Annual Underwriting Snapshot..... 13

Competitive Landscape

Competition at a Glance..... 15
SWOT Analysis 16

About Health Insurer Insights

Health Insurer Insights™ is published by Mark Farrah Associates © Copyright 2007-2009. This ongoing series of company profiles is an important source of market intelligence for the healthcare industry. Each profile offers strategic insights about a top U.S. health insurance company. All company profiles are updated quarterly to reflect the latest performance measures and strategic insights.

Companies profiled to date include Aetna, Assurant, Blue Cross Blue Shield of Massachusetts, CIGNA, Coventry Health Care, Harvard Pilgrim Health Care, Health Care Service Corporation (HCSC), Health Net, Humana, Kaiser Permanente, UnitedHealth Group and WellPoint.

Company profiles included in the **Health Insurer Insights**™ series may be purchased as single reports or on a subscription basis. Visit www.markfarrah.com or call 207-985-8484 for more information.

Non-disclaimer

Many data and information resources were used as points of reference by the publisher to produce **Health Insurer Insights**™. Furthermore, personal viewpoints and opinions are expressed throughout the research. Mark Farrah Associates has not received compensation that is directly or indirectly related to the personal viewpoints and opinions expressed.

Though every effort has been made to accurately report data and information about company performance and business developments, the publisher cannot and does not guarantee freedom from errors. Mark Farrah Associates does not assume liability for the accuracy, comprehensiveness or use of the information provided in reports. The publisher welcomes inaccuracies being brought to its attention, so factual errors may be corrected in future editions.

All contents within **Health Insurer Insights**™ are protected by copyright: Mark Farrah Associates © Copyright 2007-2009; all rights reserved. No part of this product may be reproduced, in any form or by any means, including but not limited to photocopying or storage in any information storage or retrieval system, without written permission from Mark Farrah Associates.

About Mark Farrah Associates

Mark Farrah Associates, headquartered in Kennebunk, Maine, is a leading provider of health insurance market data and analysis. The company's portfolio includes the new [Health Coverage Portal](#), [Health Plans USA](#), [Medicare Business Online](#), health insurance market data, healthcare market reports and research consulting services.

Mark Farrah Associates • Kennebunk, Maine • (207) 985-8484 • www.markfarrah.com

How are leading
U.S. health insurers
navigating the
economic downturn?

What *strategies* are
they using to sell
their products?

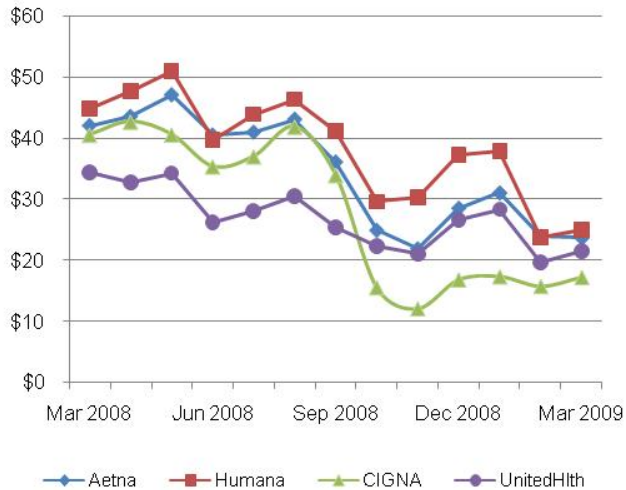
QUARTERLY COMPANY PROFILE SERIES OFFERS INVALUABLE INDUSTRY INTELLIGENCE

- ✓ Develop targeted health plan marketing and sales strategies
- ✓ Analyze competition with the latest insights and market share
- ✓ Evaluate company strengths and weaknesses as well as industry opportunities and threats

CORPORATE STRATEGY, COMPANY PERFORMANCE AND A SWOT ANALYSIS IN EACH CONCISE REPORT

- ✓ Aetna, Assurant, BCBS of MA, CIGNA, Coventry, Harvard Pilgrim, Health Care Service Corporation, Health Net, Humana, Kaiser, WellPoint, UnitedHealth
- ✓ Published *quarterly* to reflect the latest insights and information
- ✓ Fulfilled in *PDF format* for easy distribution and download
- ✓ Company at a Glance; Strategy; Management Changes; Competitors at a Glance
- ✓ Performance Overview; Member Mix; Underwriting Snapshot

Health Plan Stock Prices



SPECIAL SUBSCRIPTION RATES AVAILABLE